



Caring for
your image

iMAGo





IMAgo

Compatible with linear, convex and sector probes, with the ImaGo you can be prepared for anything you may face on farm.

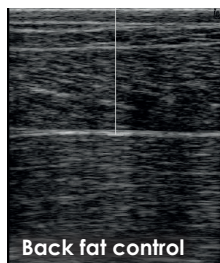
With exceptional image quality, you can rely on the ImaGo for a fast and accurate pregnancy diagnosis for bovine and equine work using the linear rectal probe as well as for small ruminants using the sector probe.

The ImaGo is equipped with the latest technology allowing for automatic back fat and follicle size calculations.

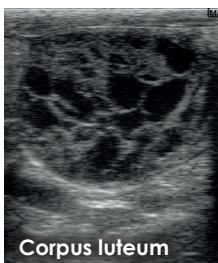
With an intuitive touchscreen interface, the scanner is simple and easy to navigate when exchanging probes and application.

Rugged and robust, the lithium-ion battery has a life of up to 5 hours and can keep up with your busy day. The comfortable carry straps offer greater comfort and freedom of movement, allowing you to focus on what really matters.

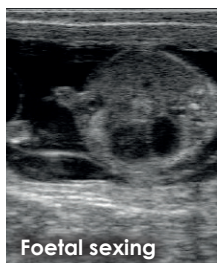
The digital conception (processor+FFGA) allows the ImaGo presets to be customised and upgraded in the future.



Back fat control



Corpus luteum



Foetal sexing



Linear
Rectal



Linear
External



Convex



Sector

Contact us now

www.imv-imaging.com info@imv-imaging.com +44 (0) 1506 460023

facebook.com/IMVimaging [twitter/IMVimaging](https://twitter.com/IMVimaging)



Specifications

Size and Weight

Weight: 1.8kg

Screen: 6.5"

Magnesium Body

Imaging Modes

B,B+B

Zoom

Cineloop

Text and annotations

Measurements and tables

Clinical Applications

Reproductive Tract

Bull Genital Tract

Back fat

Abdominal

Tendons

Musculoskeletal

Probe Compatibility

LB740 Linear

LB760P Linear Rectal

CB360S Convex

SB355M Sector

DB355M Rectal Sector

Storing and Connectivity

Images and clips storage

RCA port

DC output

USB

Bluetooth