



Duo-Scan:Go™

Quick Guide



This quick guide outlines the primary user instructions for Duo-Scan:Go (DSGC01) and Duo-Scan:Go Plus (DSGC02)



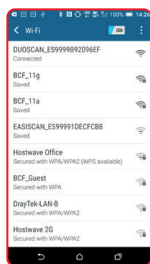
First time use – activation

Press and hold the power button on the scanner until the blue LED switches on. Download the IMV Go Scan app from Google Play Store or the App Store. Once downloaded launch the app. To activate the scanner successfully you will need ensure your scanner is charged and that you have an internet connection.



1. App requests to connect to scanner

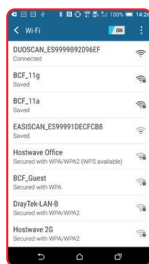
Note if the Wi-Fi LED flashes on the scanner it is not connected to any smart device.



2. Select DUOSCAN from the Wi-Fi page



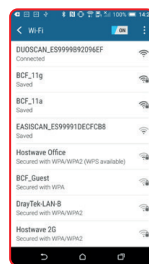
3. App requests to connect to the internet



4. Select your local Wi-Fi network to connect to the internet



5. App requests to connect back to the scanner



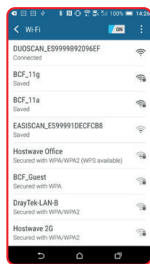
6. Select DUOSCAN from the Wi-Fi page

Normal start up process

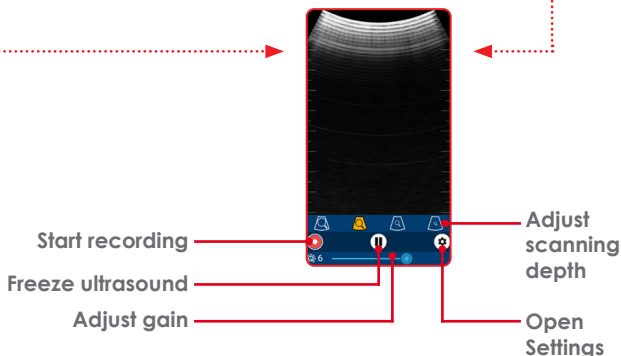
After a few seconds, the ultrasound image will appear. Touch anywhere on the screen to bring up the live scanning menu.



1. App requests to connect to scanner

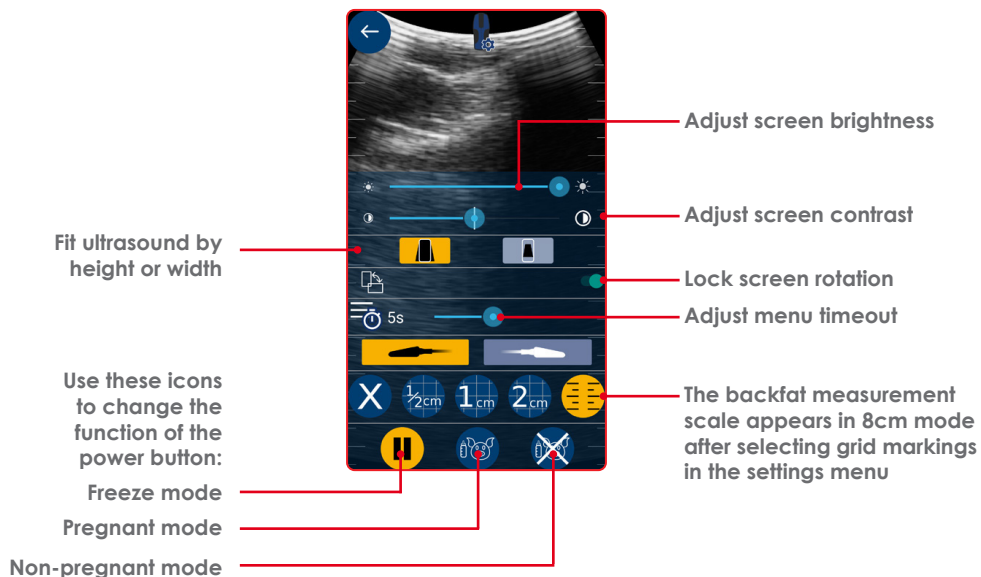


2. Select DUOSCAN from the Wi-Fi page



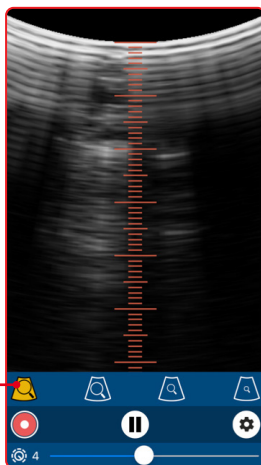
You are now ready to scan

Settings menu

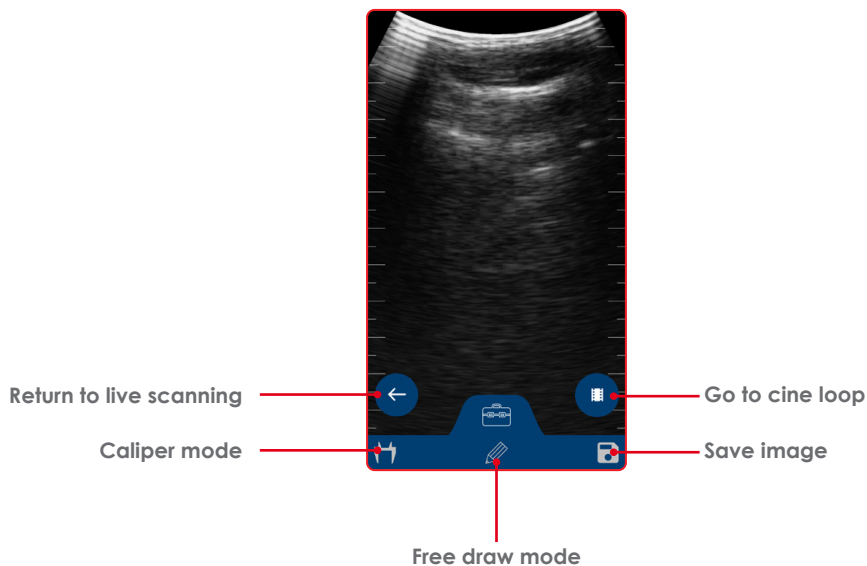


Backfat measurement function

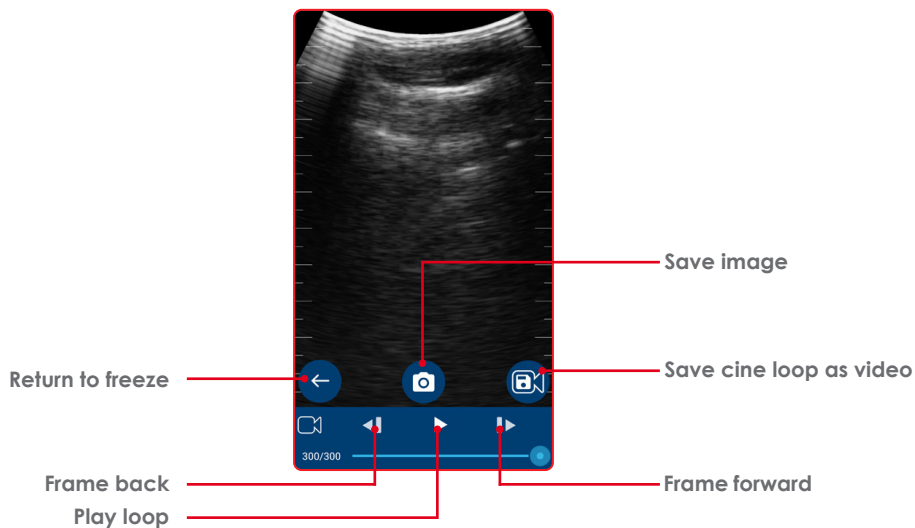
The backfat measurement scale only appears when you press this icon, after selecting grid markings in the settings menu



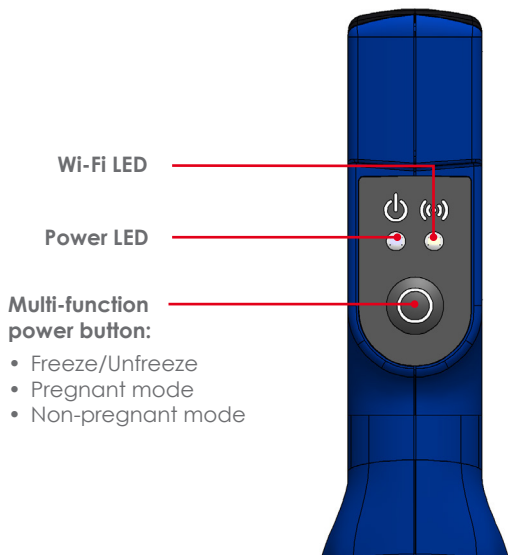
Calipers mode



Cine loop menu

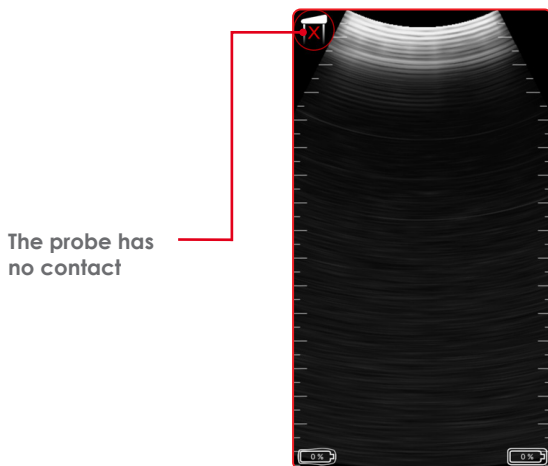


LED sequence



Power LED	
Blue flashing	Scanner turning on
Blue	Scanner on and battery between 66–100% charge
Yellow	Scanner on and battery between 33–66% charge
Yellow flashing	Scanner on and battery between 0–33% charge
Wi-Fi LED	
Blue flashing	Scanner ready for smart device to connect, nothing connected
Blue	Smart device connected
Blue	Scanner is charging when placed on wireless charging plate
Both LEDs	
Yellow flashing	Software updating

Power saving mode



Freeze mode

This function allows you to freeze a live ultrasound image. It will also allow you to review the previous 10 secs of scanning through the app's cine loop functionality. This is good if your sow has run off! All images and clips can be saved in the app by pressing the save icon.

Pregnant mode

When in pregnant mode, short pressing the power button will increment the pregnant count. This allows the number of pregnant sows to be easily recorded.

Non-pregnant mode

When in non pregnant mode, short pressing the power button will increment the non-pregnant count. This allows the number of non-pregnant sows to be easily recorded.

Saved images

All images and video clips are stored in the smart device's photo and video gallery.

Care & maintenance

We have built the Duo-Scan:Go to be rugged and water resistant. It does however contain fragile sensitive electronics.

Duo-Scan:Go housing is water resistant enough for gentle washing and rinsing. It will not withstand powerful jets of water (e.g. tap full on or hosing it down).

Charging

The scanner is charged via a wireless induction plate. To charge the scanner place it on the plate, with the charging symbol facing down. The scanner should be charged in a cool environment, ideally around 20 °C. When the LED turns off the scanner is fully charged. Duo-Scan:Go is compatible with all WPC Qi-v1.2 compliant wireless chargers and has been certified using chargers with an output up to 5V/1A and a charge frequency of 110kHz to 190kHz.

Specification

Size:	235 mm x 50 mm x 70 mm
Weight:	246 grams
Power:	Lithium battery, 2 hours
Sealing:	Splash & dust proof
Operating temperature:	-20 °C to 35 °C
Number of crystals:	Duo-Scan:Go/32
	Duo-Scan:Go Plus/64
Frequency bands:	16.1
Scanner operating frequency bands:	B1=2412MHz-2462MHz and B2=5150MHz-5250MHz.
Maximum radio-frequency power transmitted in the frequency bands:	16.1dBm for B1 and 18dBm for B2.

Certification

Note: All IMV Imaging products are for animal applications only. The product shall not be used outside its scope as declared by the manufacturer. Hereby, IMV Imaging, declares that the radio equipment type Duo-Scan:Go (Model DSGC01) and Duo-Scan:Go Plus (Model DSGC02) is in compliance with Directive 2014/53/EU.

The full text of the EU declaration of conformity is available at the following internet address: www.imv-imaging.com/dsg-doc.

FCC – This device complies with part 15 of the FCC Rules. Operation is subject to the following two conditions: (1) This device may not cause harmful interference, and (2) this device must accept any interference received, including interference that may cause undesired operation.

If the user changes any modifications not expressly approved by the party responsible for compliance could void the user's authority to operate the equipment.

This device complies with Industry Canada's licence-exempt RSSs. Operation is subject to the following two conditions:

- (1) This device may not cause interference; and
- (2) This device must accept any interference, including interference that may cause undesired operation of the device.

Cet équipement est conforme et se soustrait de Licence au Cahier des Charges sur les Normes Radioélectriques (RSS) d'Industrie Canada.

L'opération est soumise aux deux conditions suivantes:

- (1) Cet appareil ne cause pas d'interférence; et
- (2) Cet appareil accepte toute interférence, y compris les interférences pouvant provoquer un fonctionnement indésirable de l'appareil. Contains IC4511-WL18DBMOD



Agência Nacional de Telecomunicações

"Este equipamento não tem o direito a proteção contra interferência prejudicial e não pode causar interferência em sistemas devidamente autorizados."

Need more help?

Please visit our website shop.imv-imaging.com for video manuals and FAQs.

Contact our customer care team:

UK +44(0)1506 460 023 | North America +1(507)529 8200

Head office: IMV Imaging (UK) Ltd, Imaging House
Phoenix Crescent, Bellshill, ML4 3NJ, Scotland, UK